

Caractéristiques principales

Longueur hors tout	172 ^m ,50	
Longueur flottaison	166 ^m ,50	
Longueur Veritas	163 ^m .	
Largeur hors membres	21 ^m ,70	
Profondeur de carène	8 ^m ,81	
Creux	13 ^m ,25	
Bouge au Pont Principal	0 ^m ,435	
Hauteur des superstructures	2 ^m ,600	
Ecartement des sections horizontales	0 ^m ,881	
" " " longitudinales	1 ^m ,762	
Ecartement des cples de tracé	Partie formée PR	6 ^m ,3103
	" " A	4 ^m ,7735

Mat p^e corne de 1^r

Reflecteur

Itaque ϕ 16^o

Piquage Acier ϕ 16^o

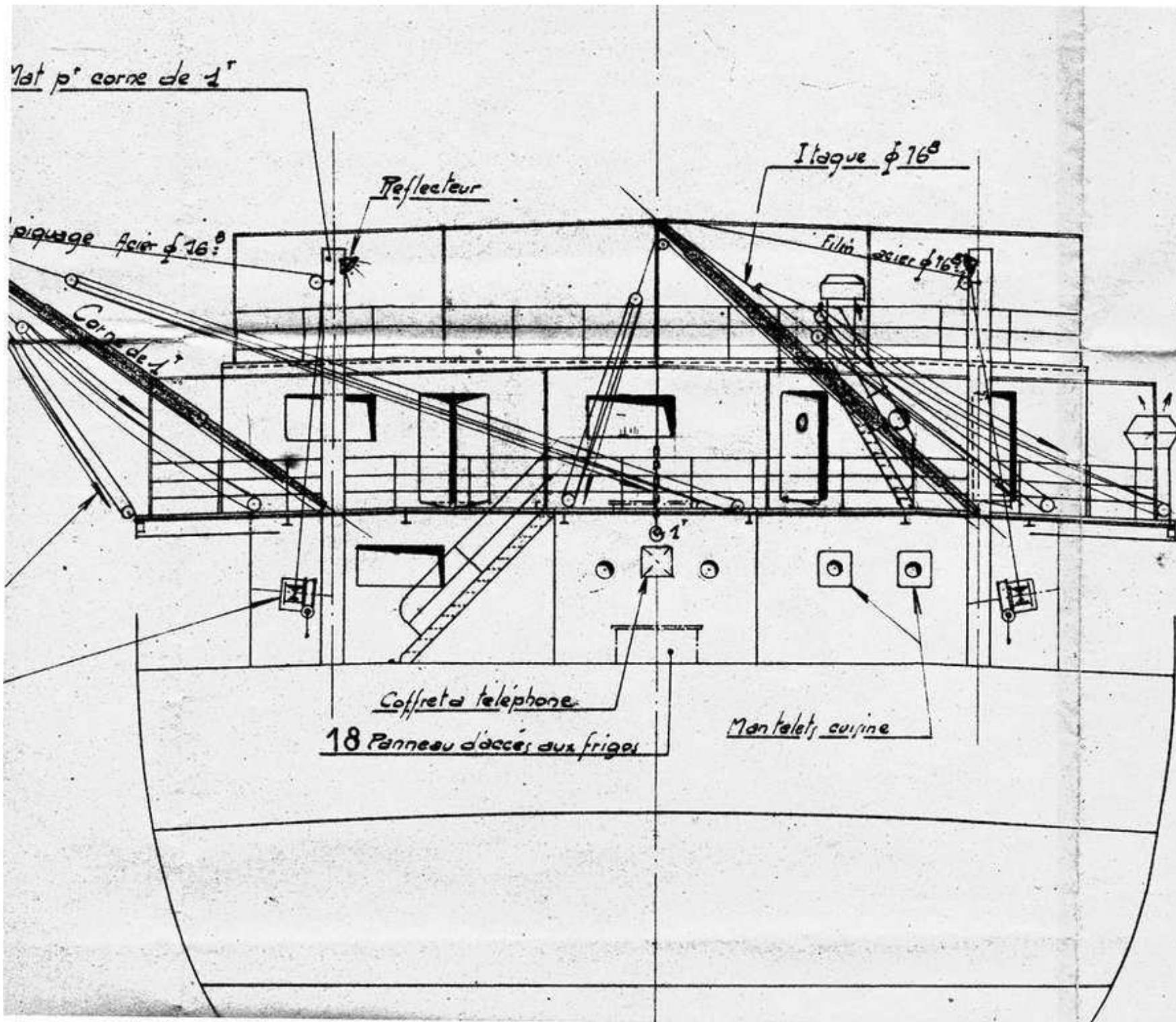
Film acier ϕ 16^o

Corne de 1^r

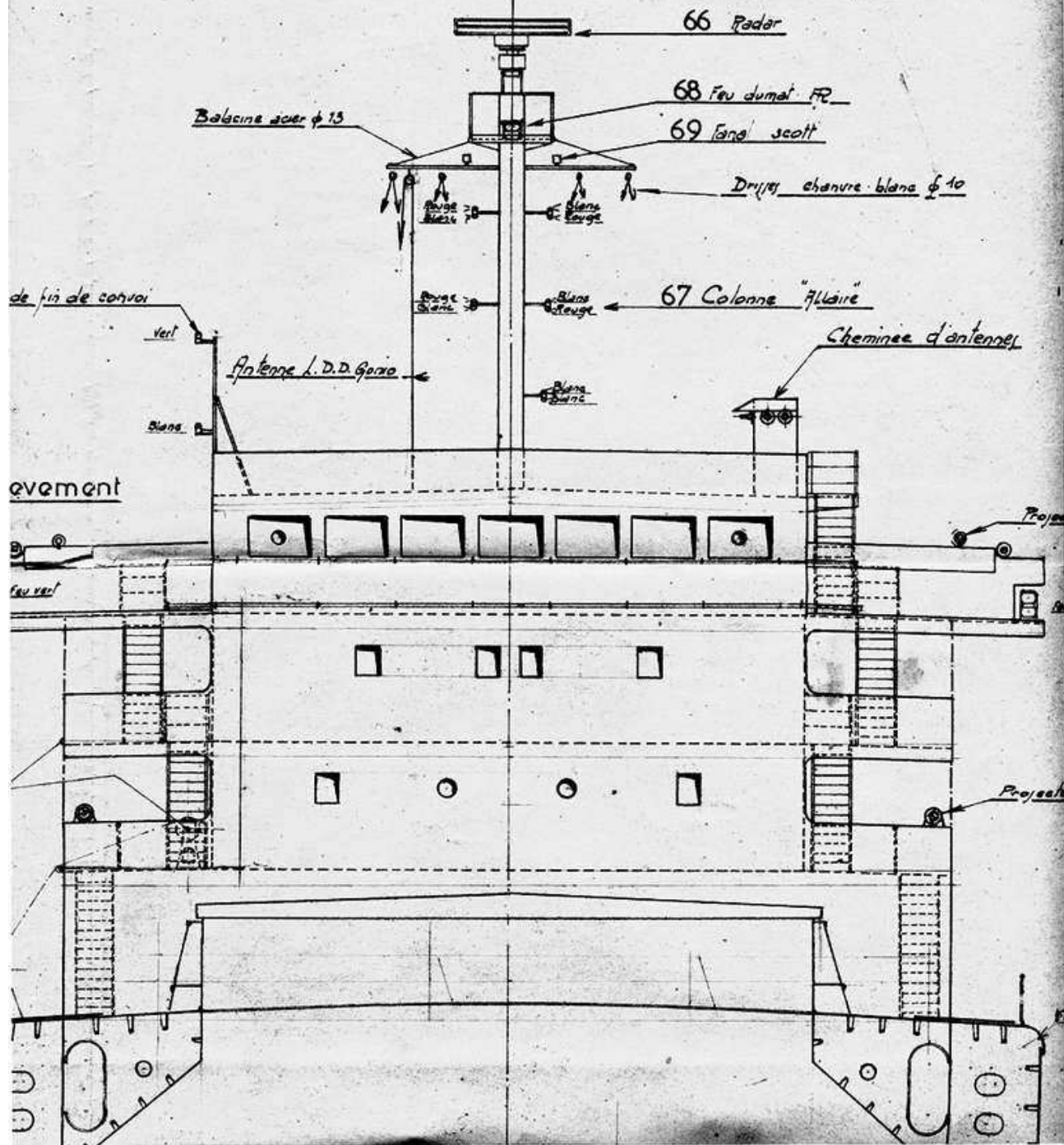
Coffret a telephone

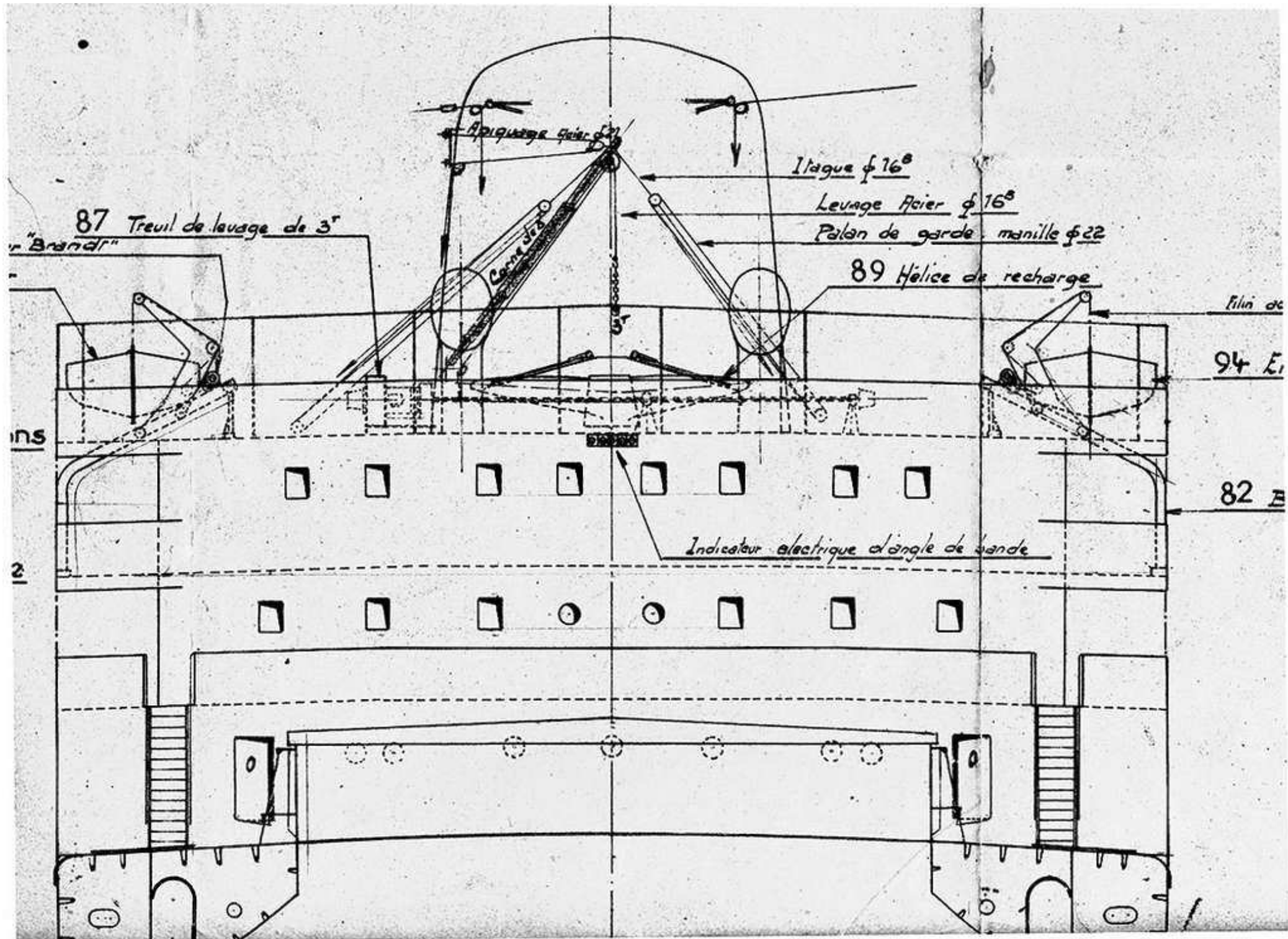
Mantelets cuisine

18 Panneau d'accès aux frigos



Vue de l'AV





l'angle de bande sur face AR
du portique

45 Feu de mat AV

Réfecteur

46 Feu de mouillage AV

47 Sirène super-tyfon

Appuyage (acier $\phi 21$)

Itaque acier $\phi 16^8$

Itaque acier $\phi 21$

42 Corne de 5^r

Levage acier 25²

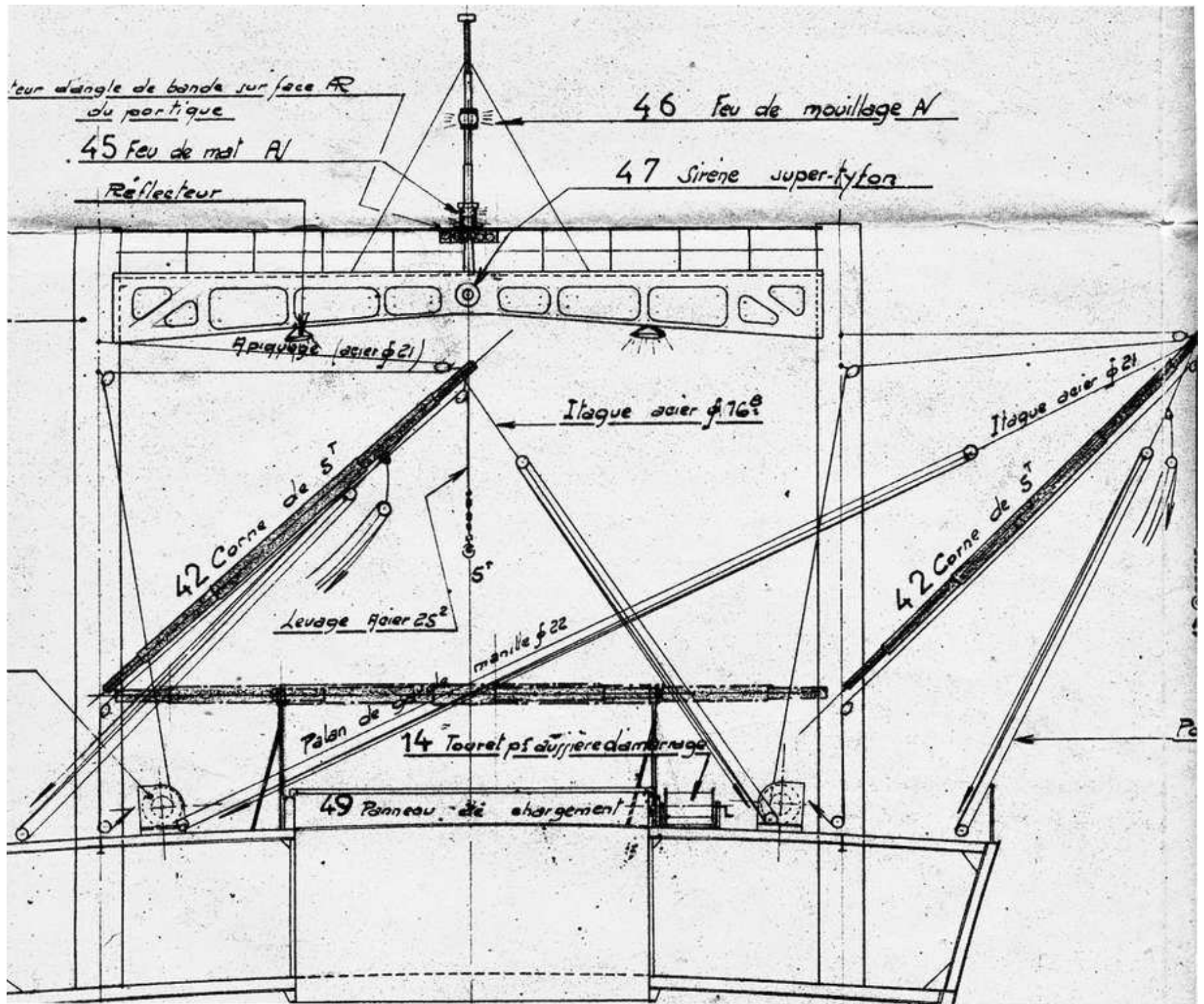
manille $\phi 22$

42 Corne de 5^r

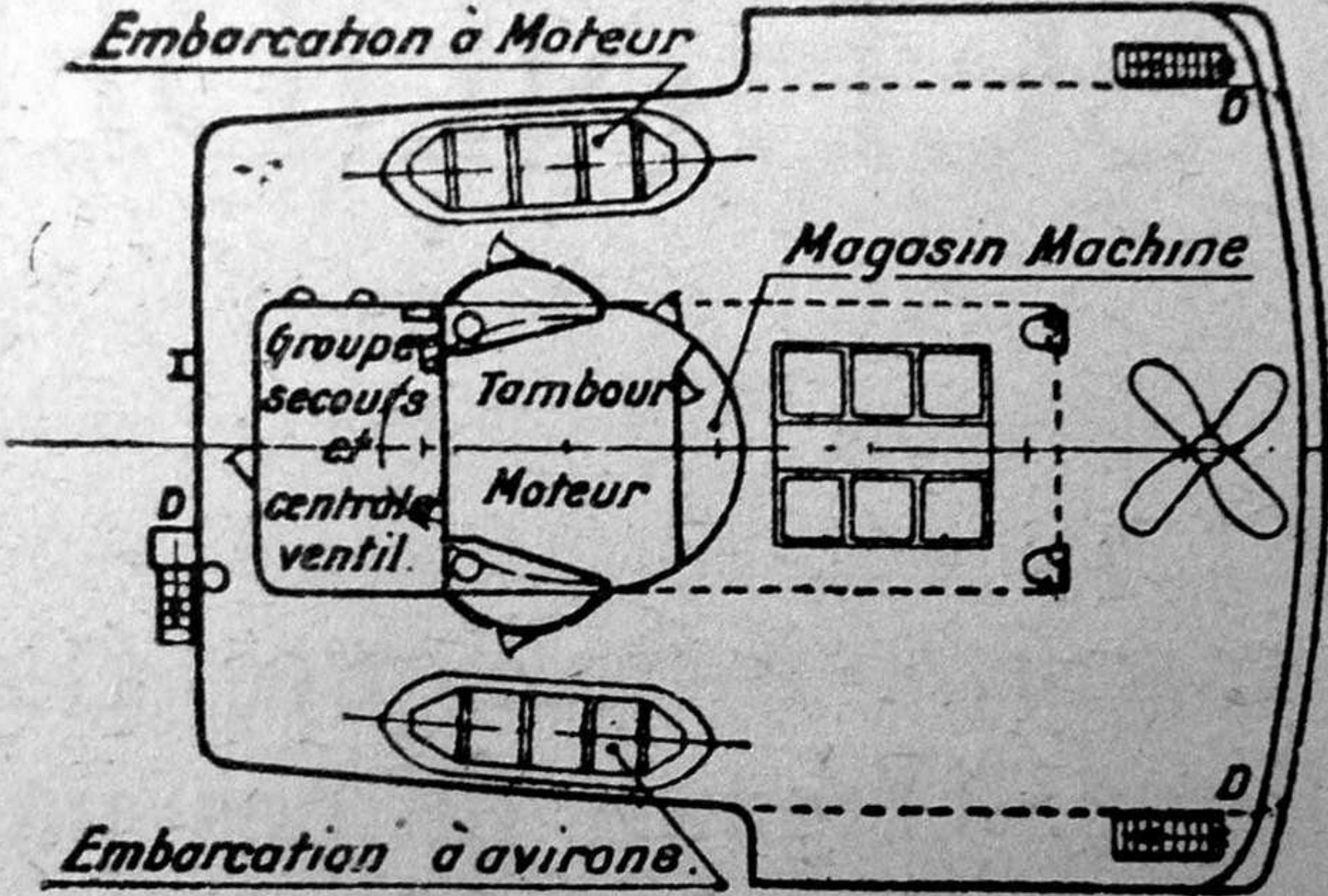
Palan de 5^r

14 Toquet ps d'arrière d'arrimage

49 Panneau de chargement



Embarcation à Moteur

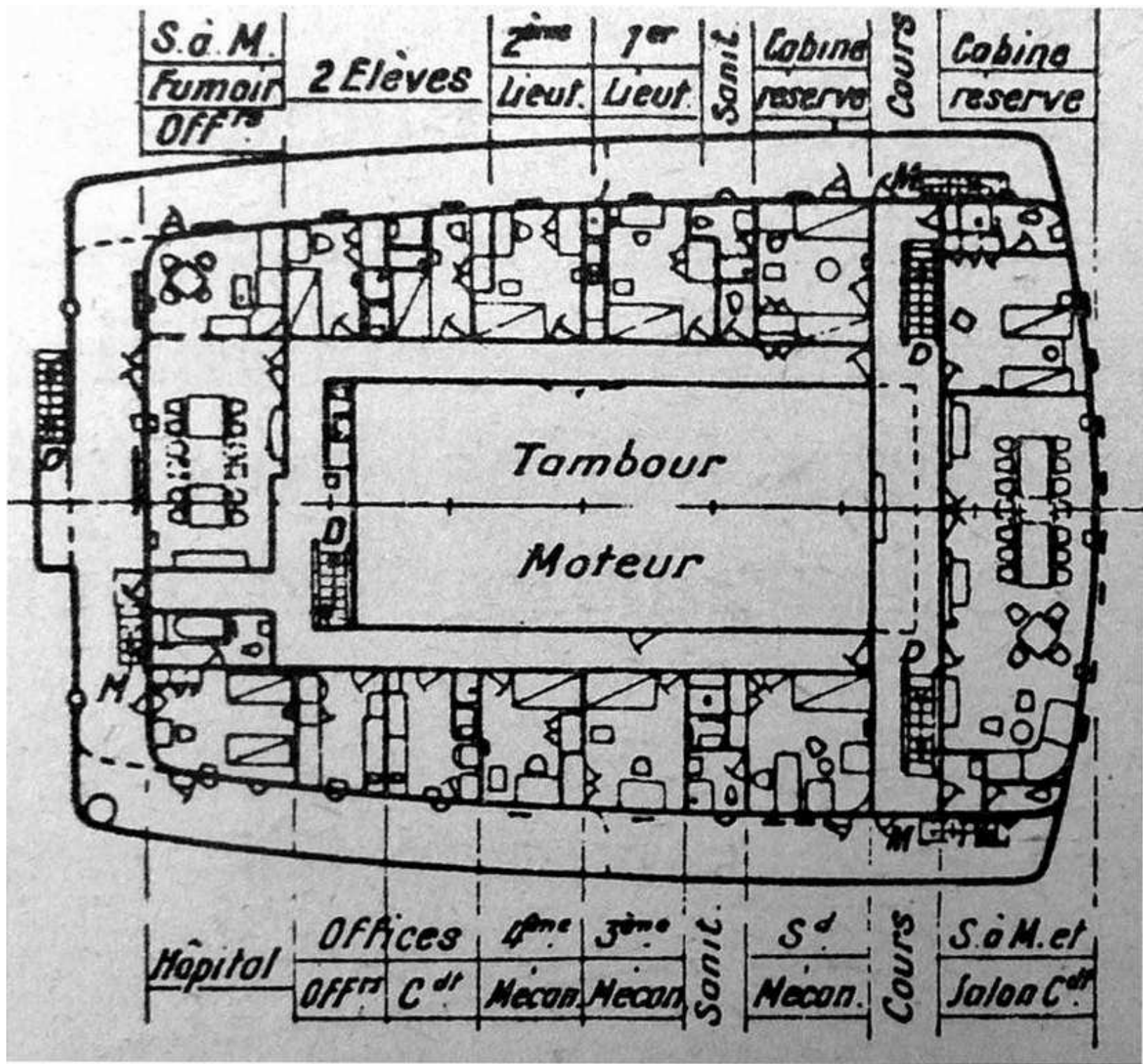


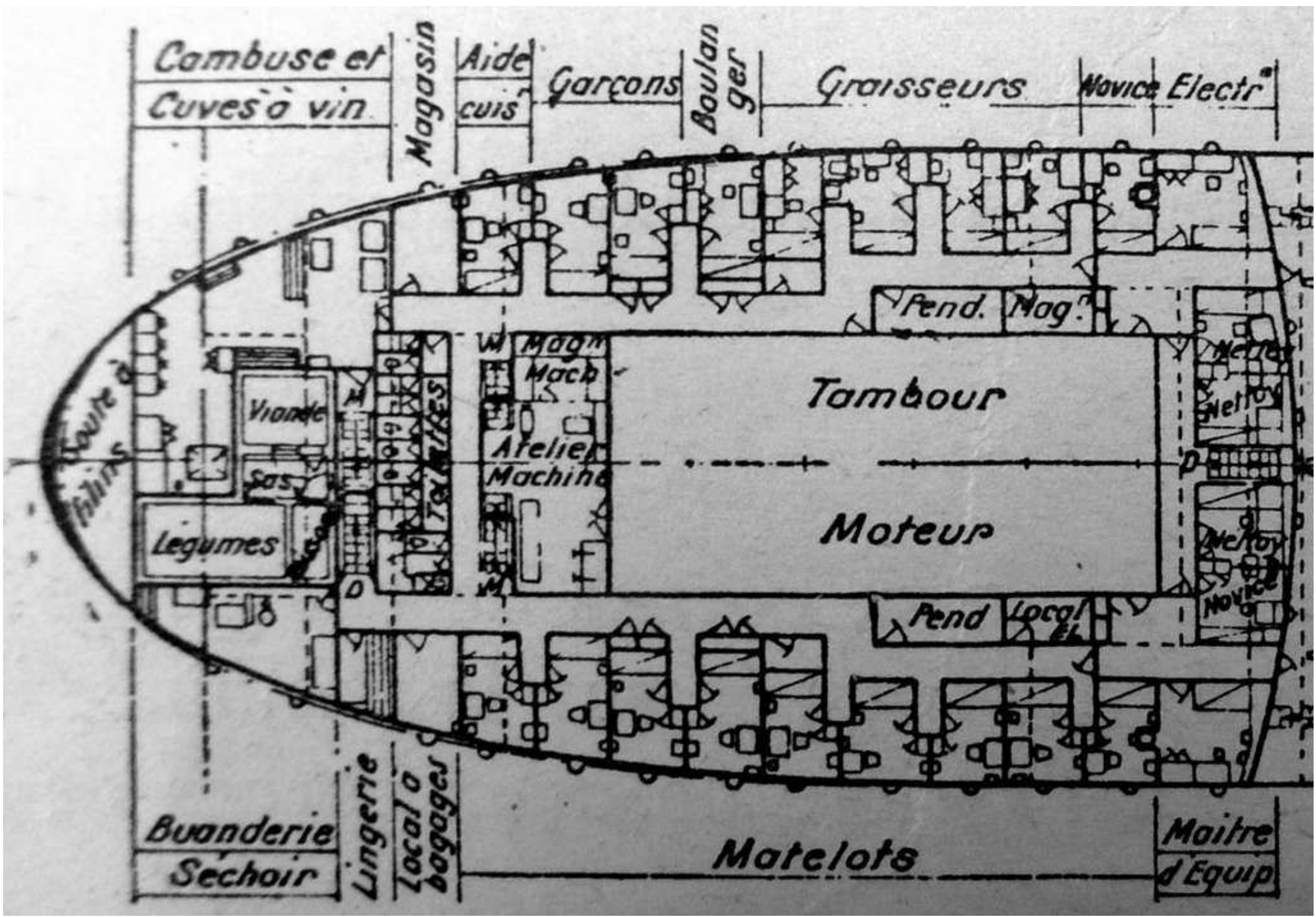
Magasin Machine

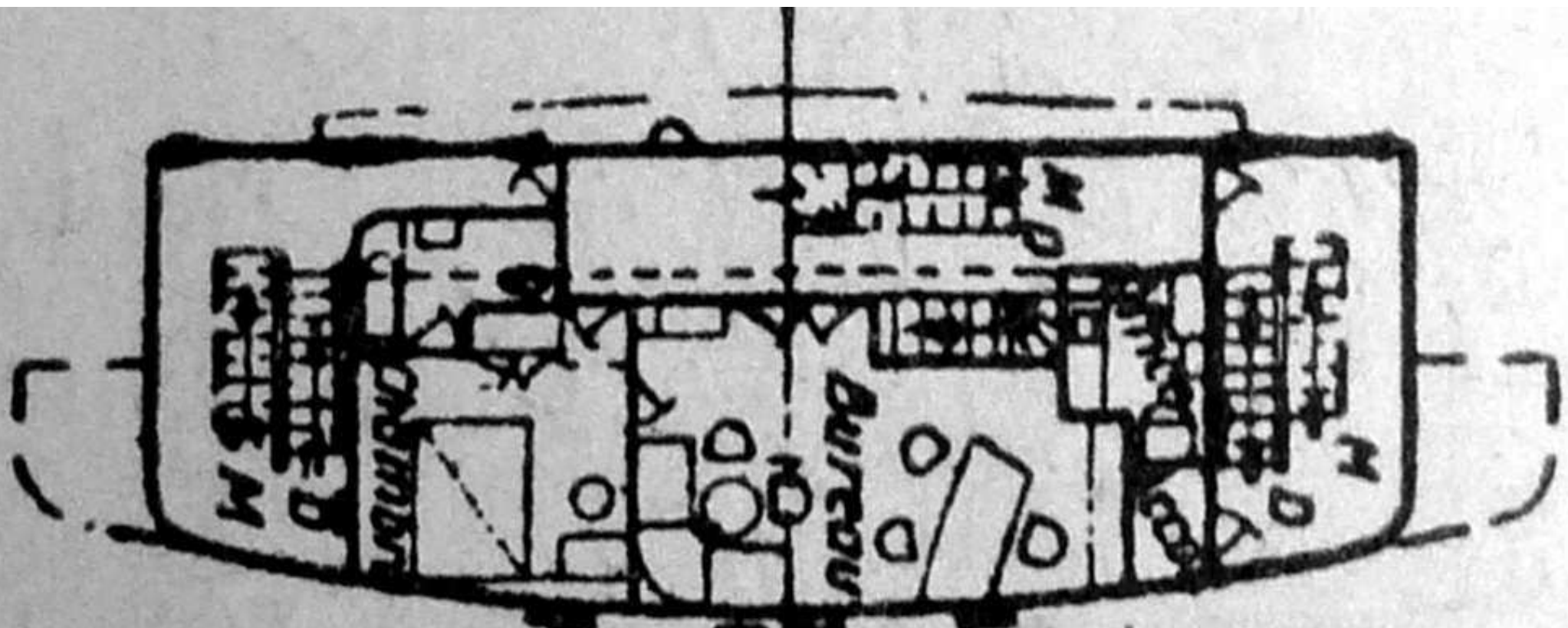
Groupes secours
et
centrale
ventil.

Tambour
Moteur

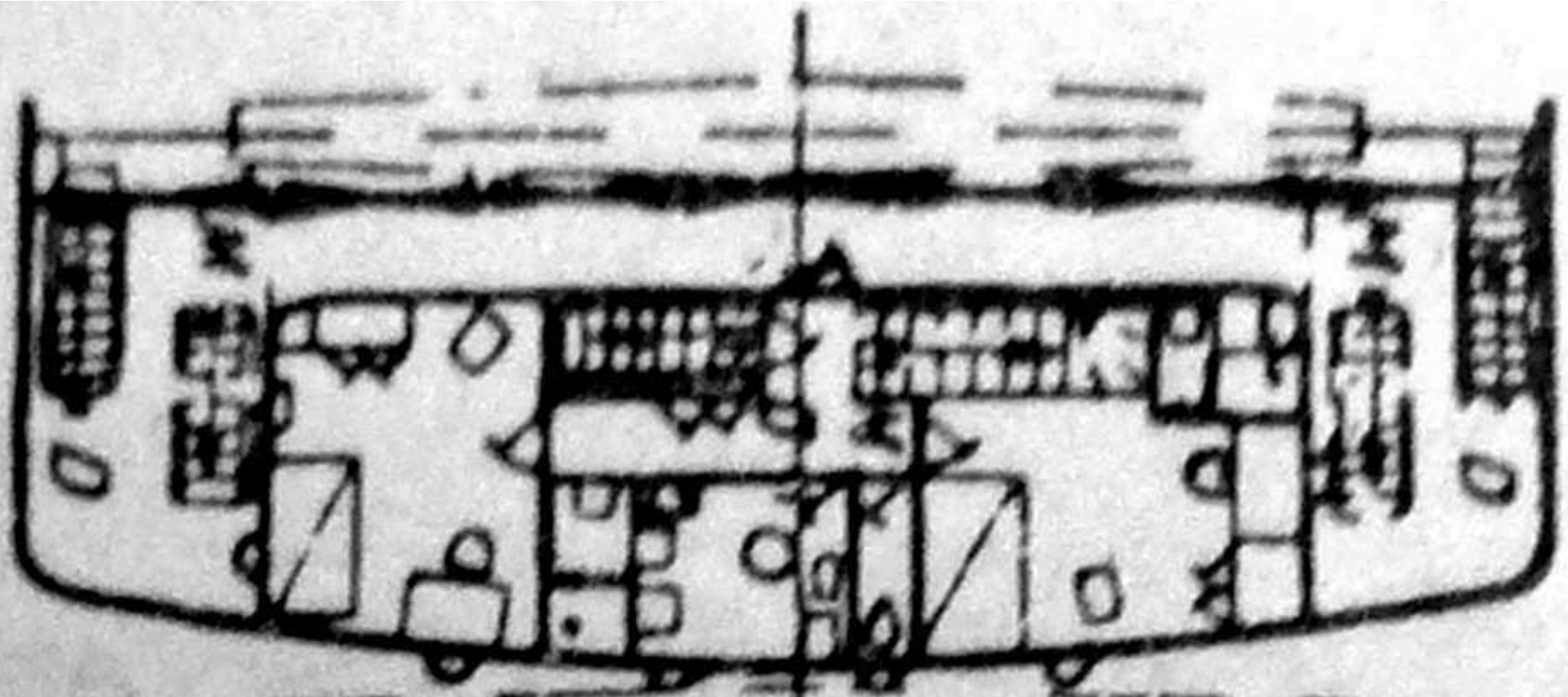
Embarcation à avirons.



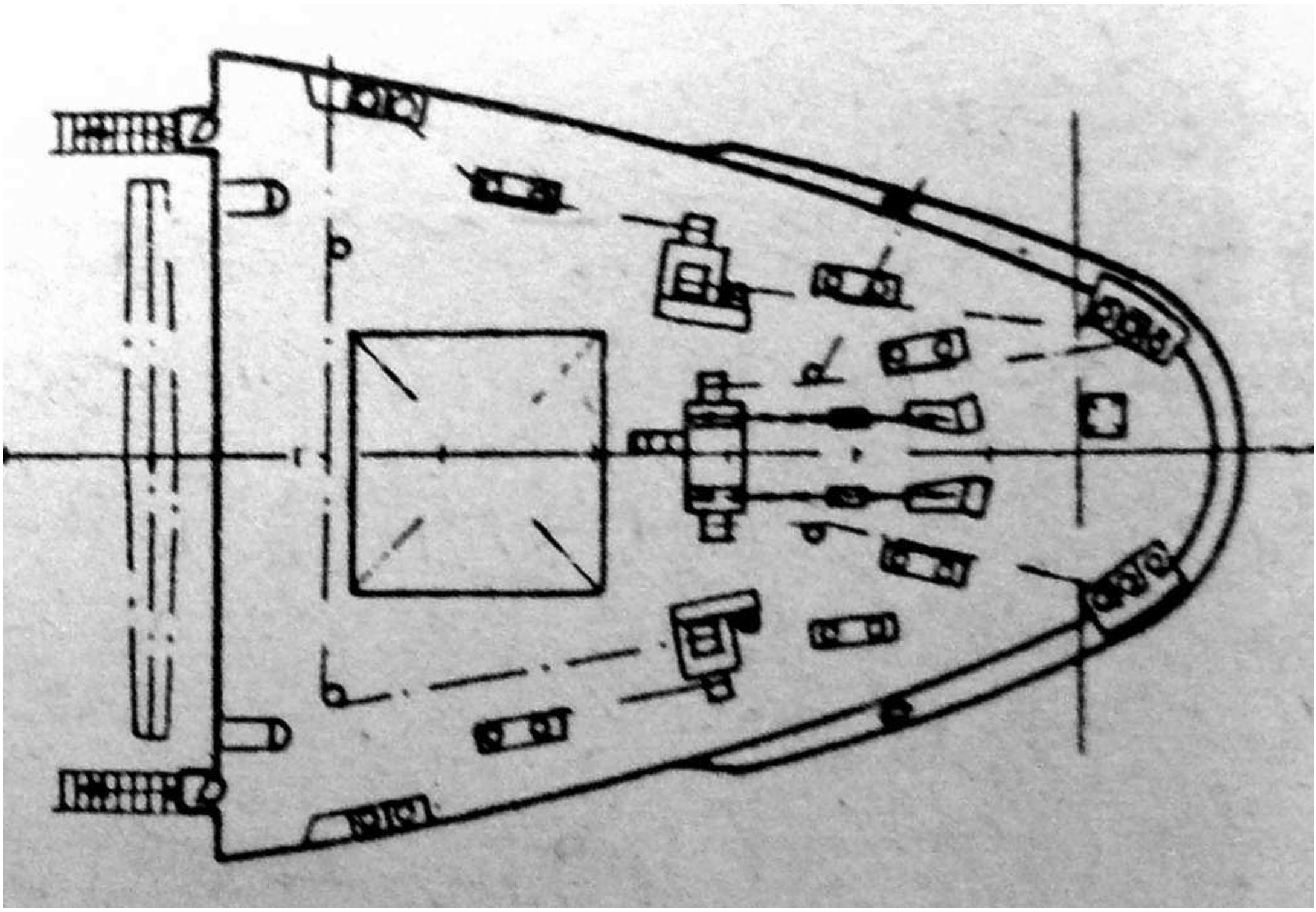




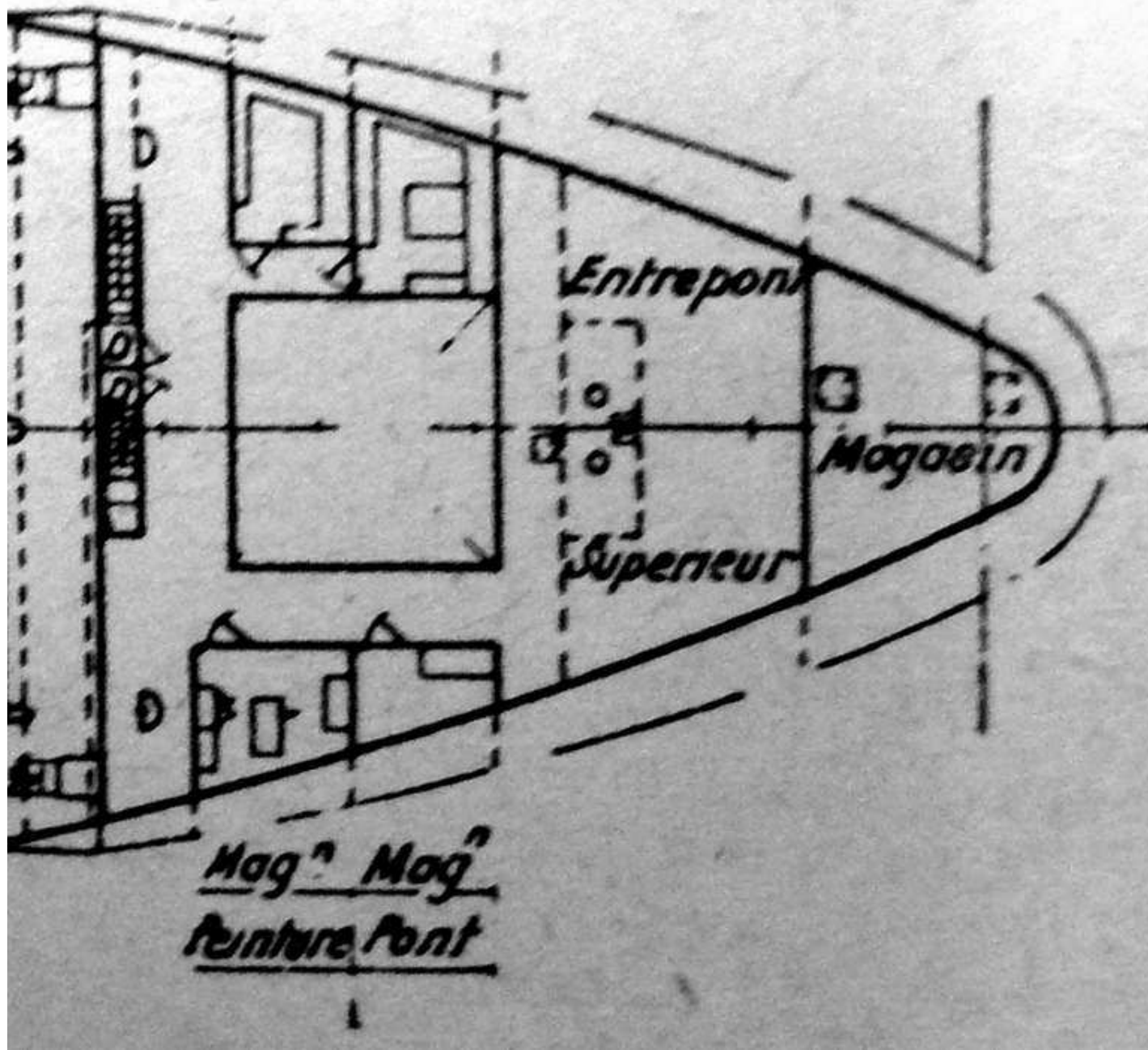
Apport du c de



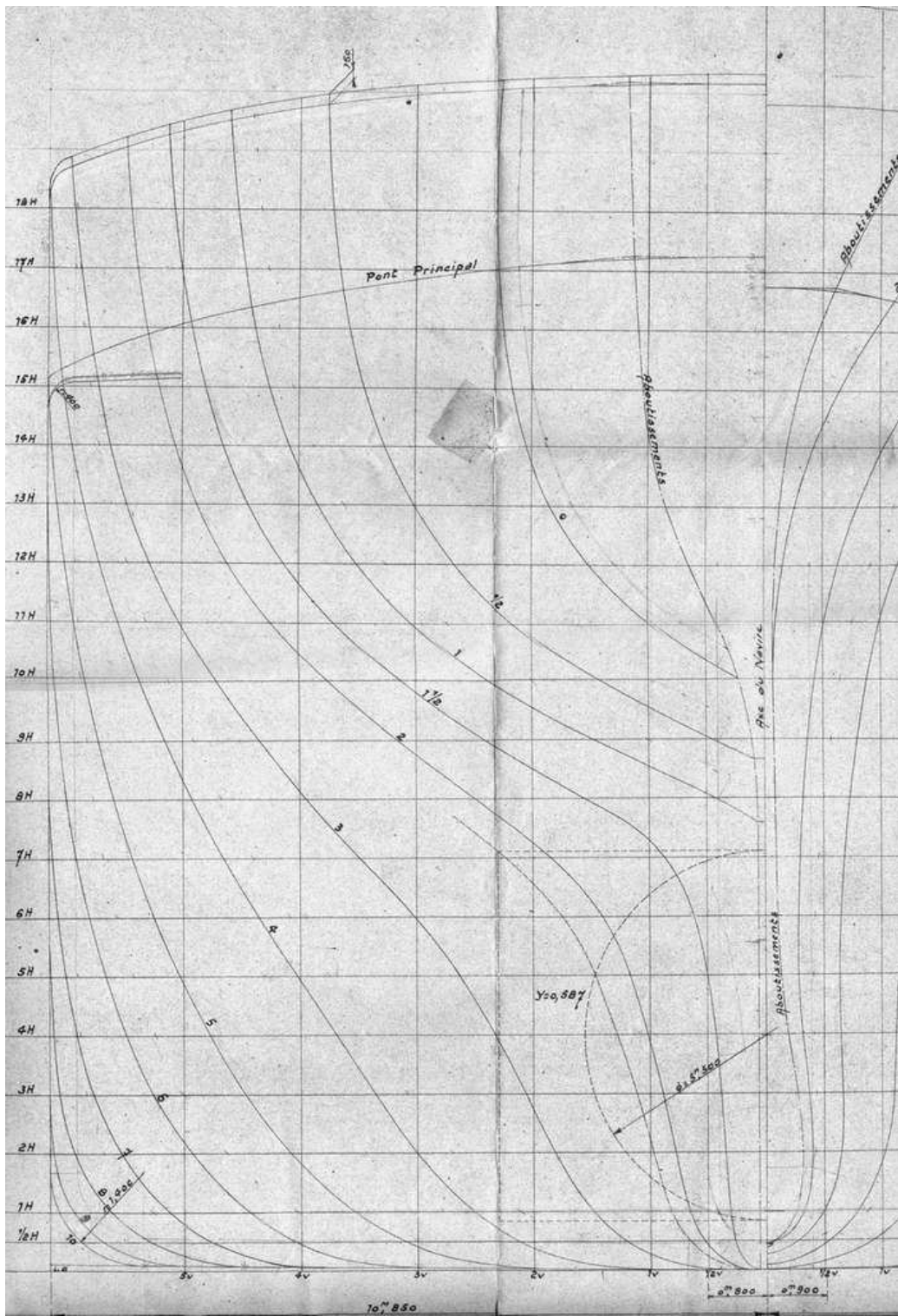
Eleve local gyro Radio

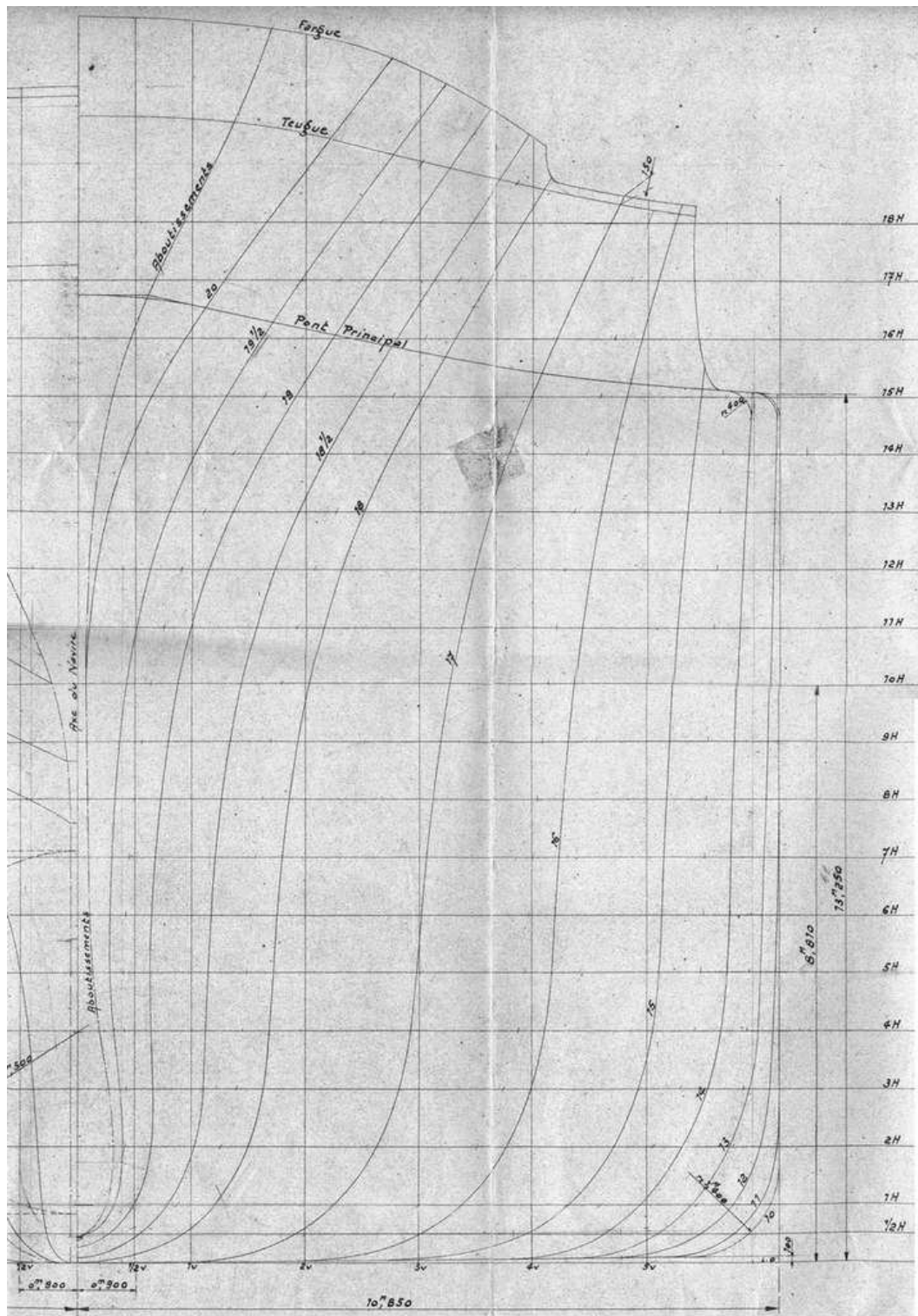


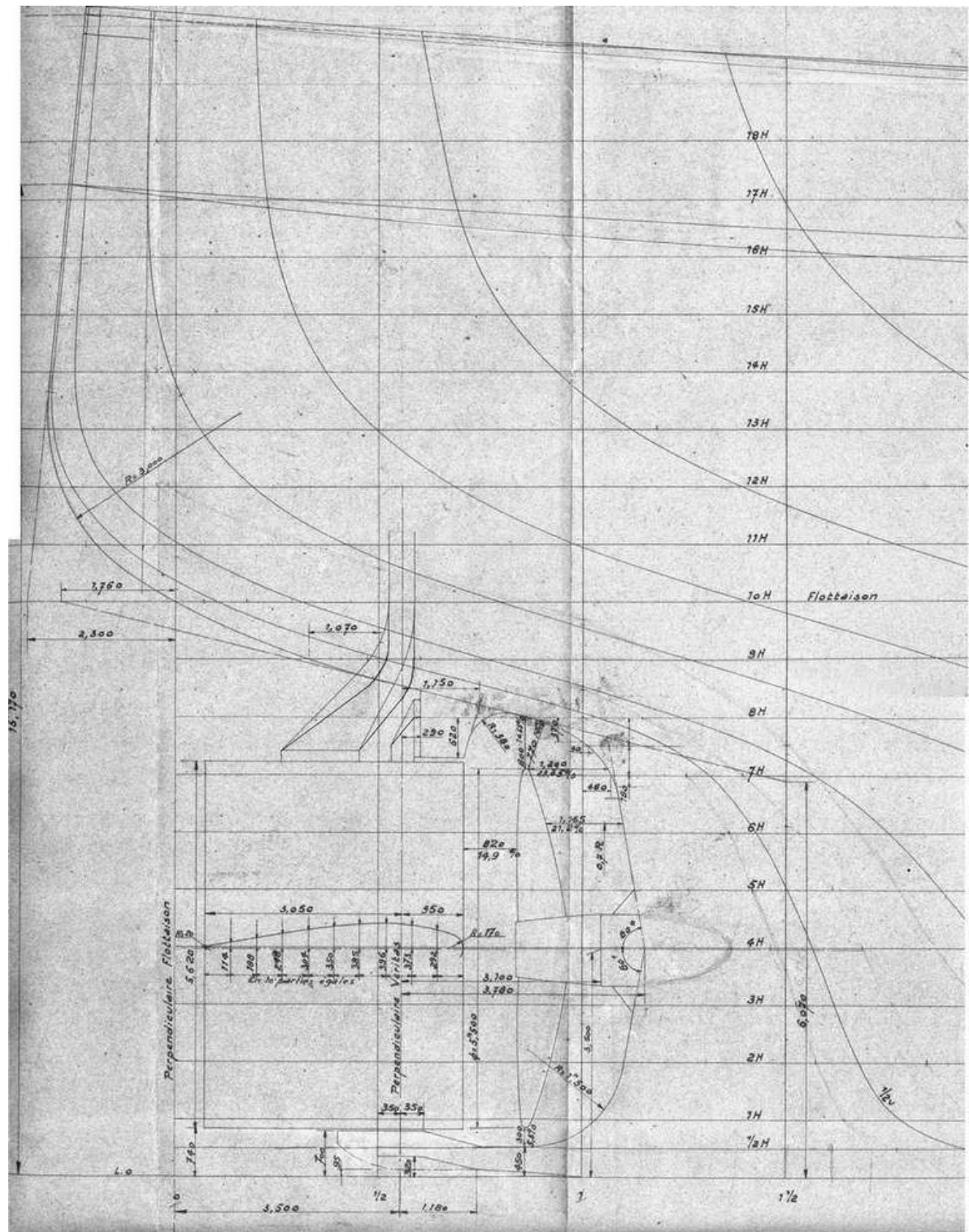
Magasins
Pont

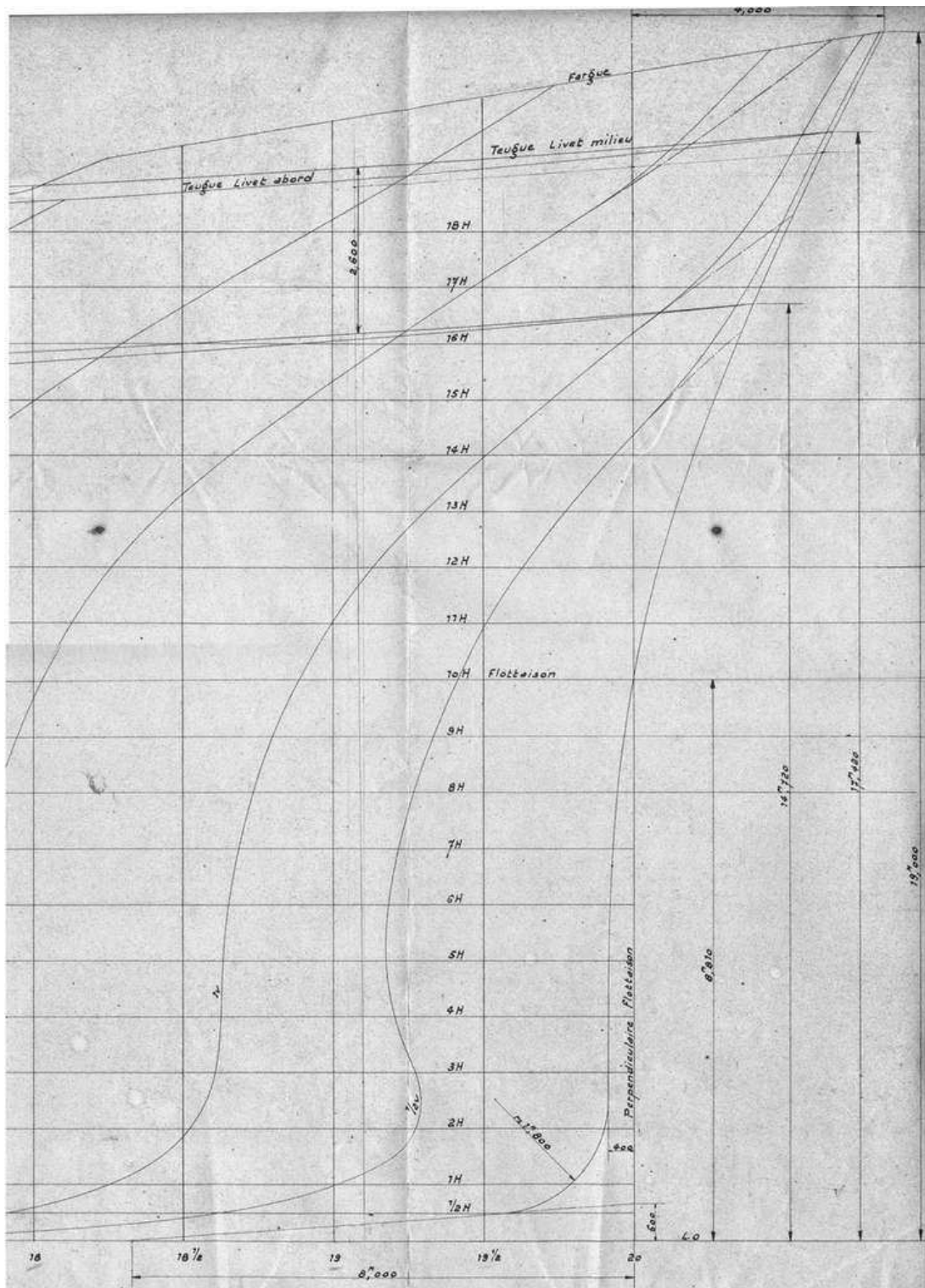


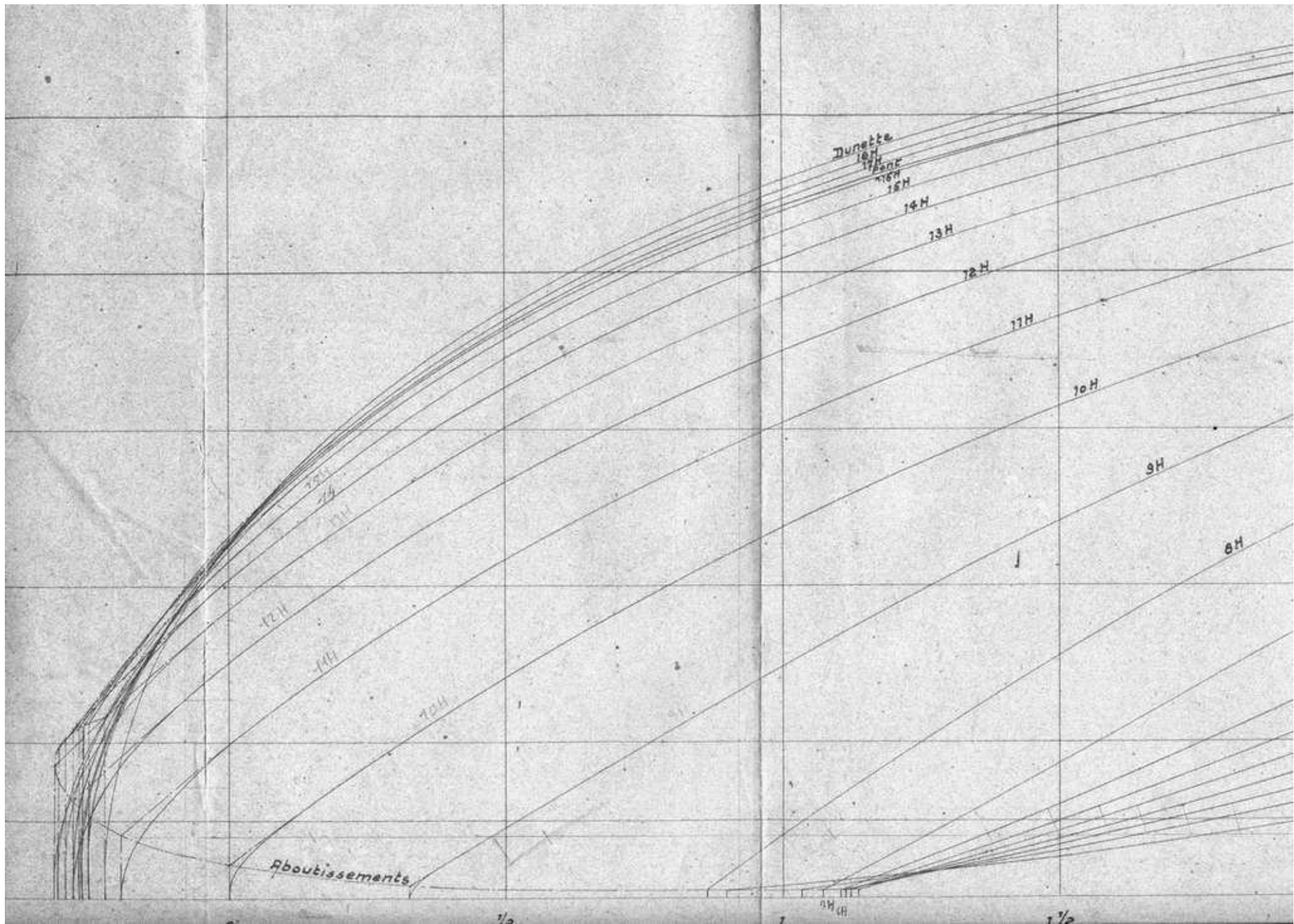
Magⁿ Magⁿ
Penture Pont

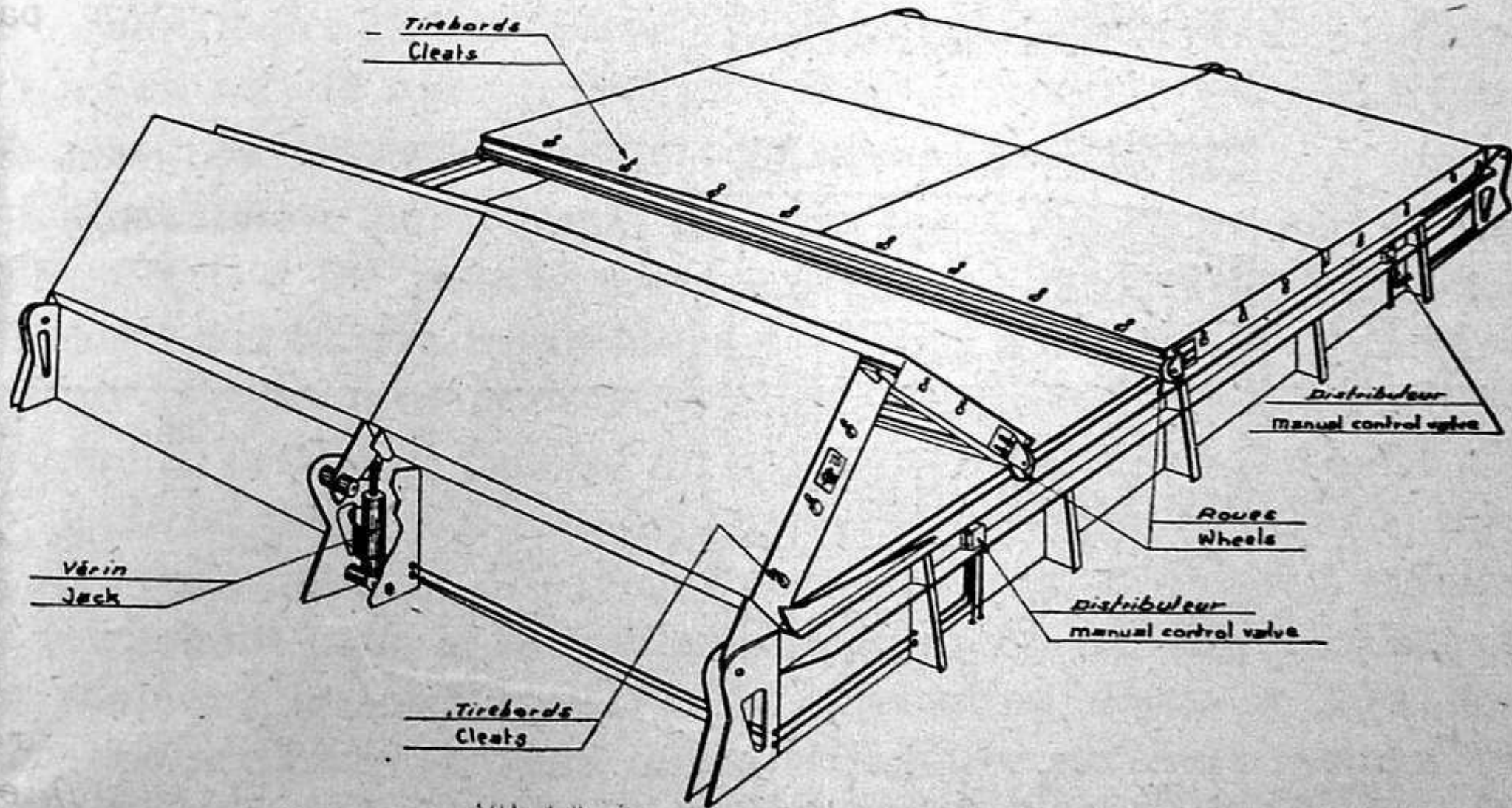




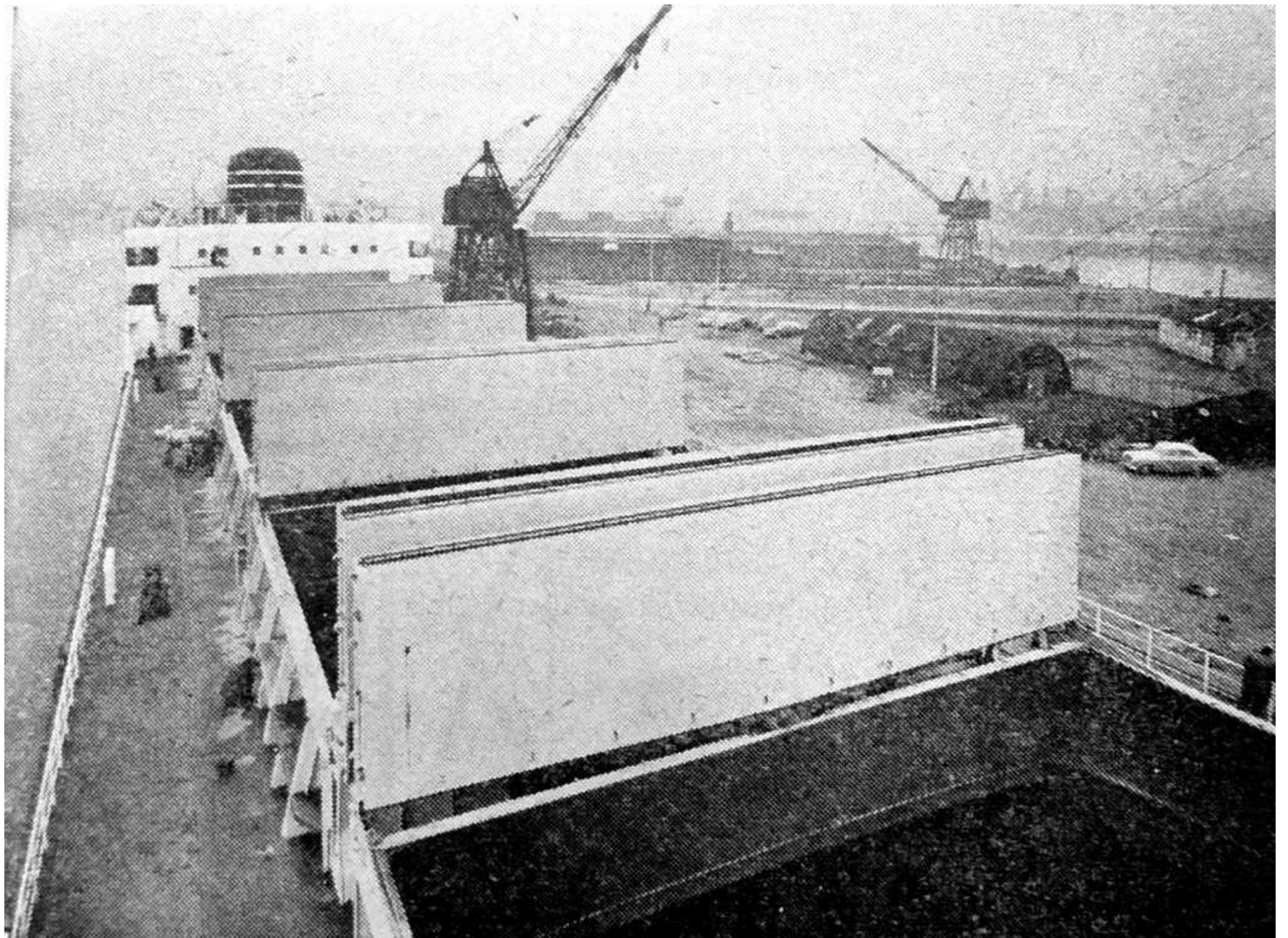


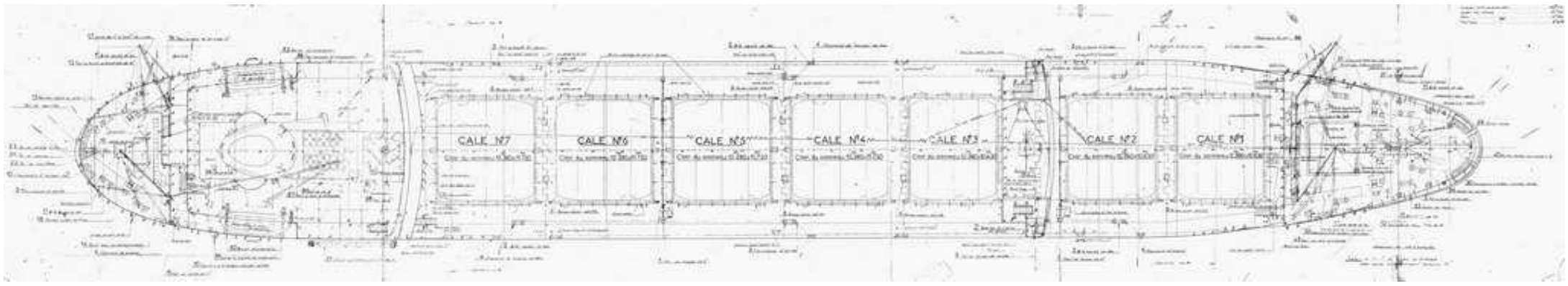


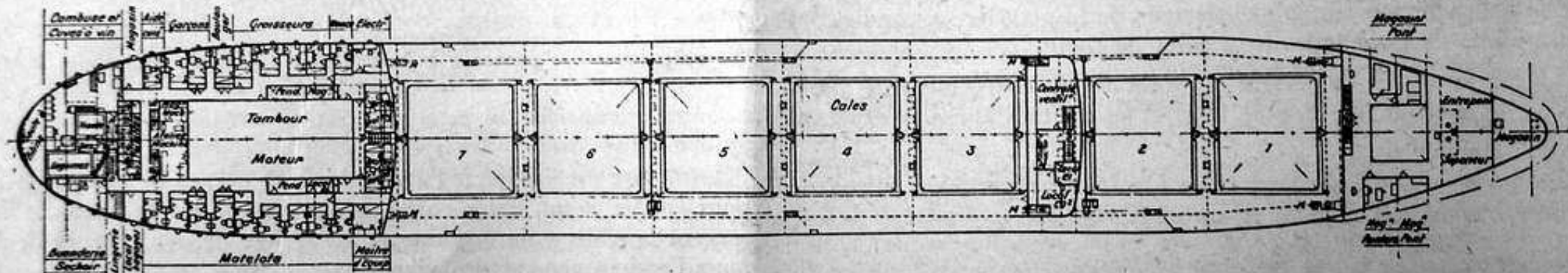




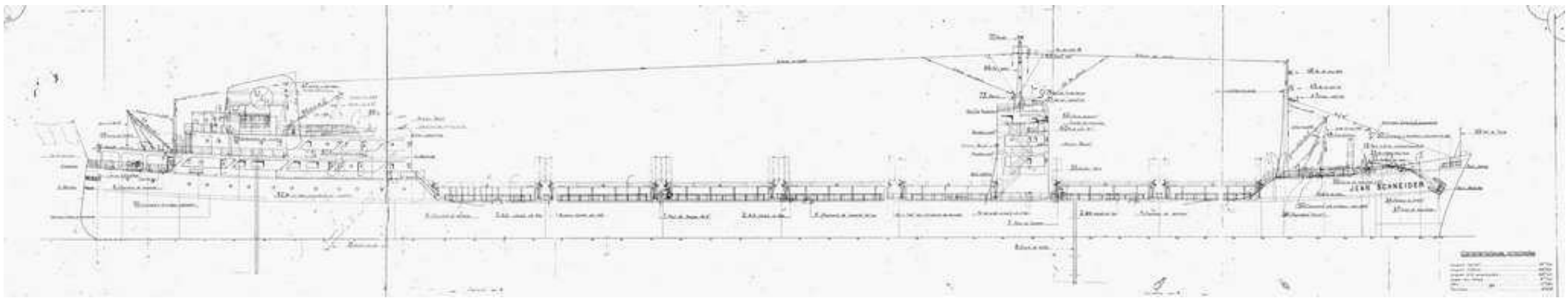
Vue perspective des panneaux « Folding » à commande hydraulique installés sur le « Jean-Schneider ».



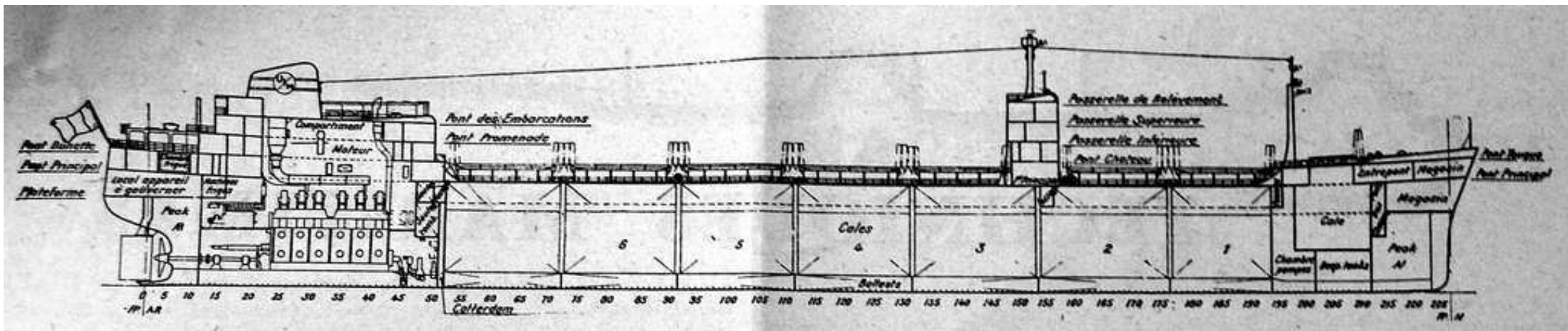


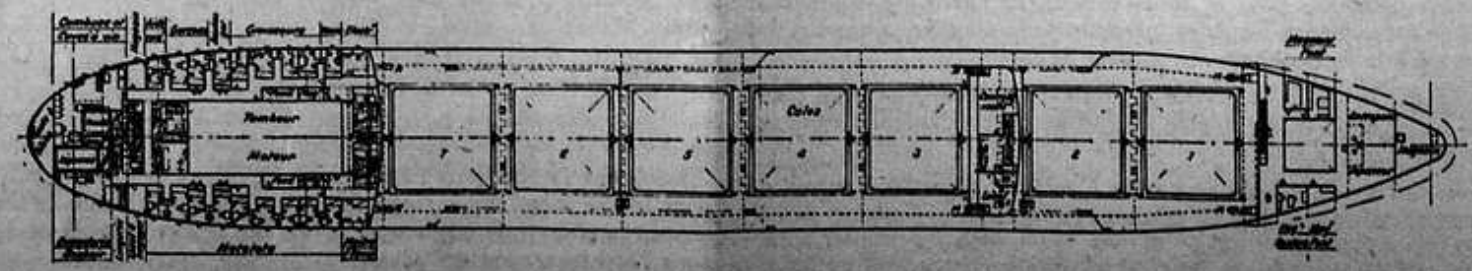
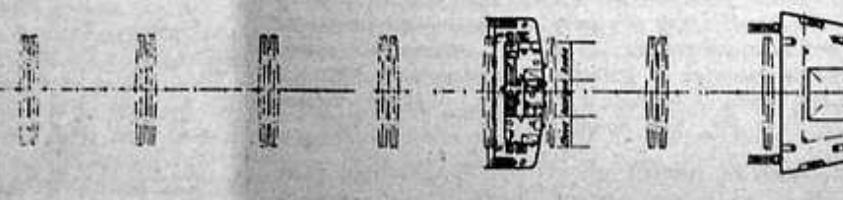
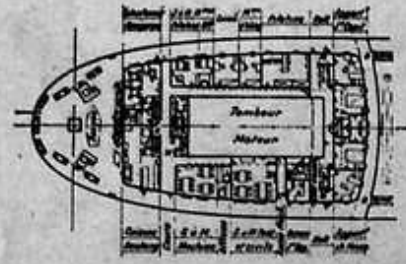
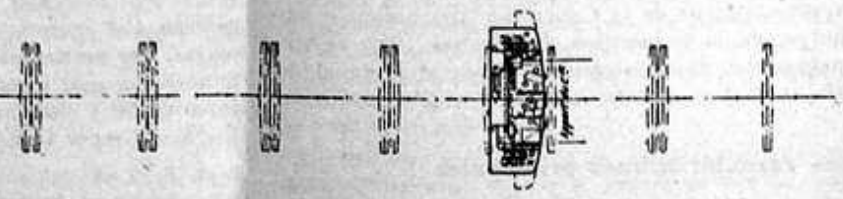
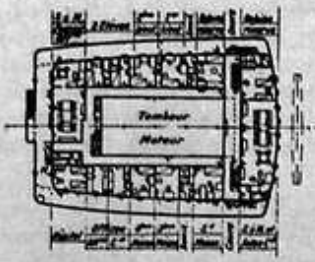
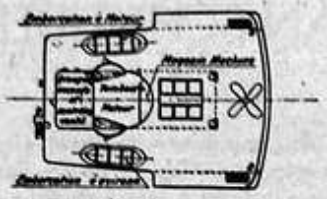
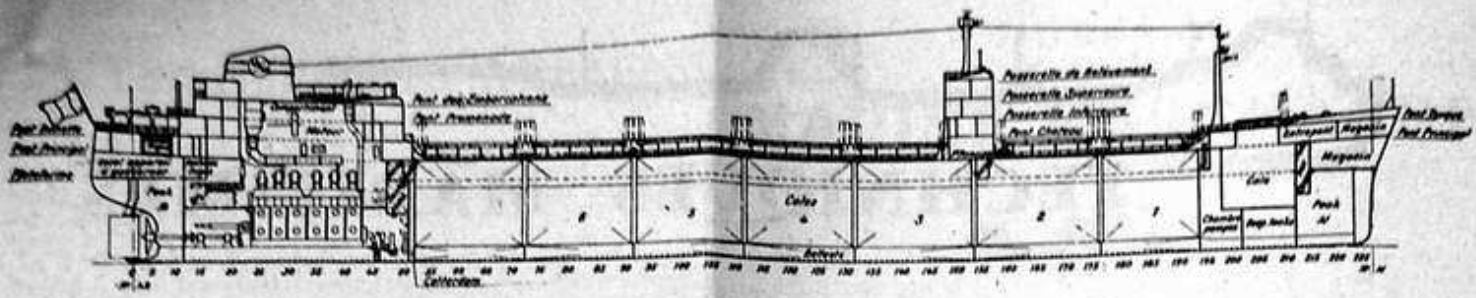


Plans du « Jean-Schneider ».



GENERALAUSLEGUNG
 1:100
 1877





Plans du « Jean-Schnelder ».